



OECD Mining Regions: building a network to enhance productivity and well-being

5th and 6th October 2017
Antofagasta - Chile

CONVENES



PRESENTS



COORDINATES



ORGANIZES



COLLABORATES



MEDIA PARTNER



Municipalidad
Antofagasta



PROMPTING ABILITIES FOR THE FUTURE

I ADDING VALUE FROM MINING

On 14 March 1990 the biggest foreign mining investment Project in Chile is inaugurated. Minera Escondida becomes a pioneer in the private industry based on both innovating productive processes and the development of a new business model built in within the community.

1990



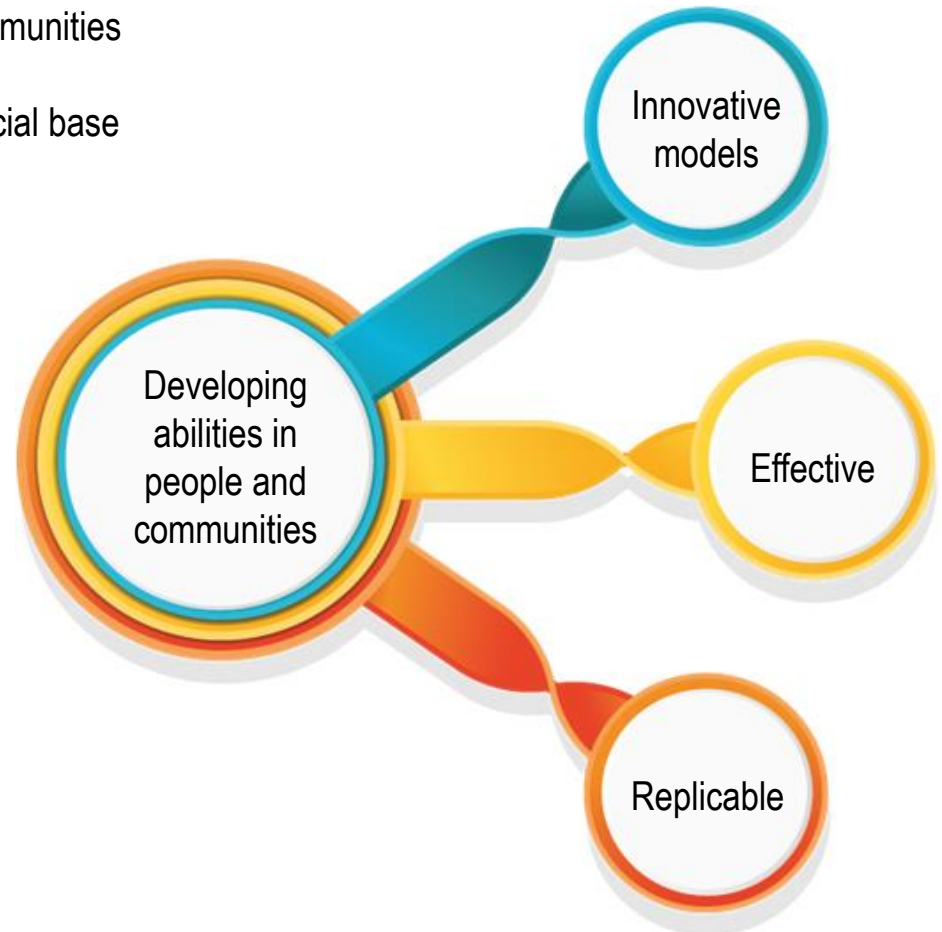
In 1996 Minera Escondida Foundation takes off as one-of-a-kind, unprofitable and autonomous organization in Chile, focused on developing individuals and communities' abilities.

1996



Why is Minera Escondida Foundation founded?

- Mining is certainly a chance of growing with the communities
- Diversifying the region's productive, working and social base
- Strengthening human and social capital



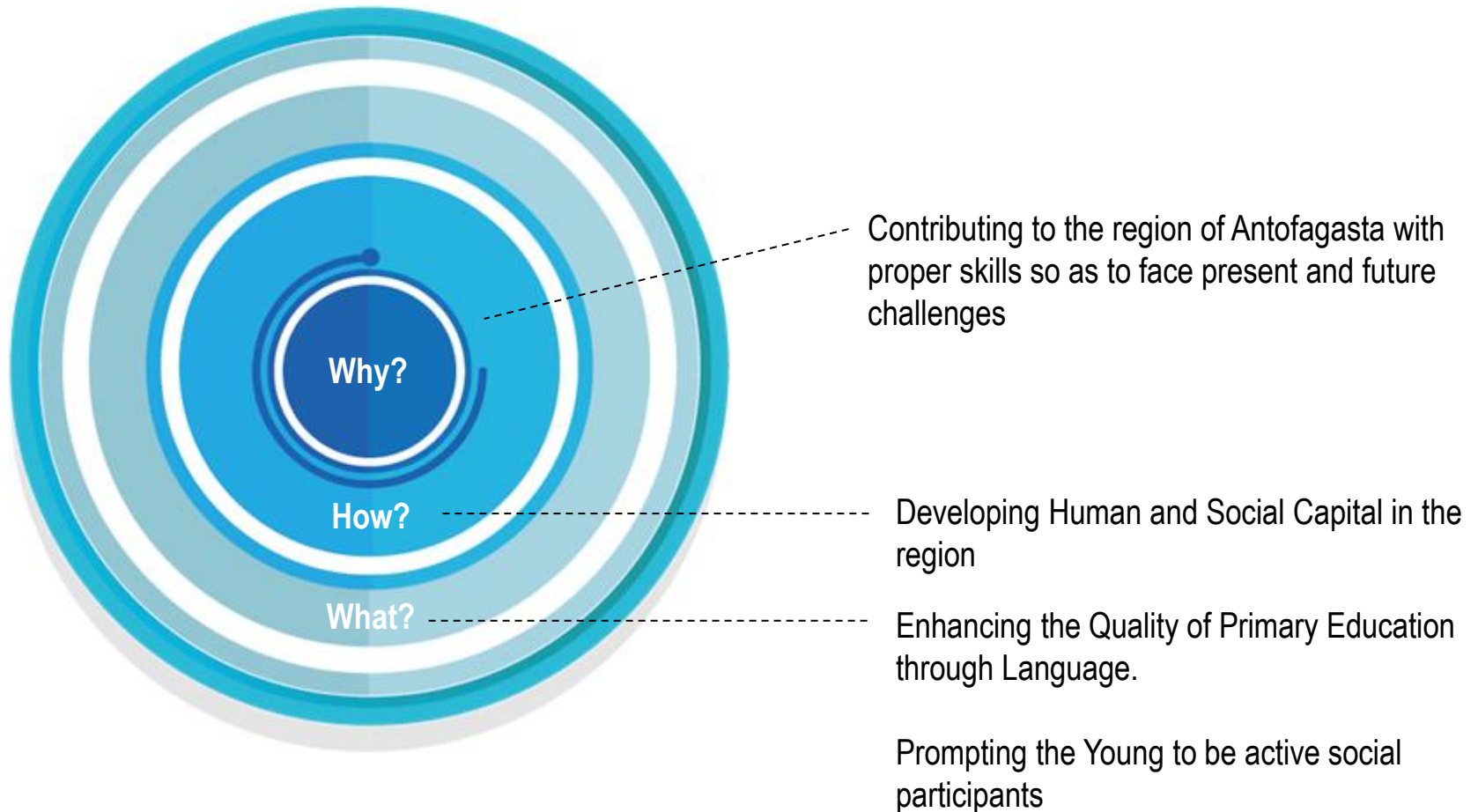
I PRESENT IN THE REGION



- We have been present in the Region of Antofagasta more than 20 years, working tightly with organizations, associations and partners from the 9 districts throughout pioneering programs and projects.
- We are directly financed by Minera Escondida through a 5-year financial settlement based on a plan approved by a board of directors every year and where its members are representatives of the community nationwide, experts from different strategic fields and Minera Escondida executives.
- A total amount of US\$ 3,5 millones financed multiple programs and projects carried out by Minera Escondida Foundation in 2016 in areas such as Education, Social Participation and Cultural Extension.
- We have two important spaces: the Antofagasta Communitarian Building and San Pedro de Atacama Communitarian Space.

I WE PROJECT OURSELVES INTO THE FUTURE

In 2013 we began a strong plan in order to set new objectives for the next 5 years defining as main action points both the First Infant Education program and Social Participation throughout community construction.



I PRIMARY TEACHING AS THE BASE



Improving the quality of education has been the aim of Minera Escondida Foundation since the very beginning, nonetheless, after a reflexive process and considering the international evidence of how children are encouraged with learning at early stages, the area of Education decided to focus its work program on the First Infant.

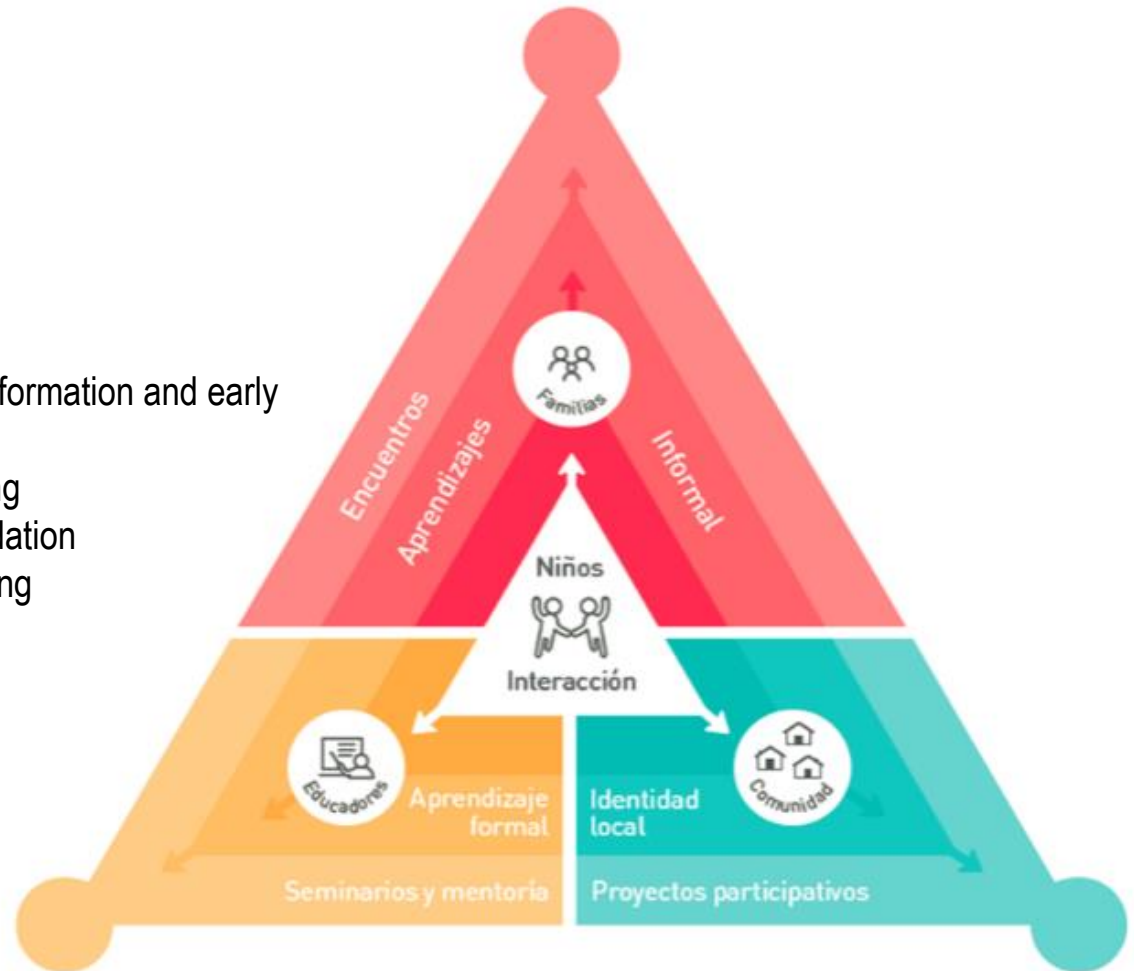
FIRST INFANT PROGRAM



METHODOLOGY

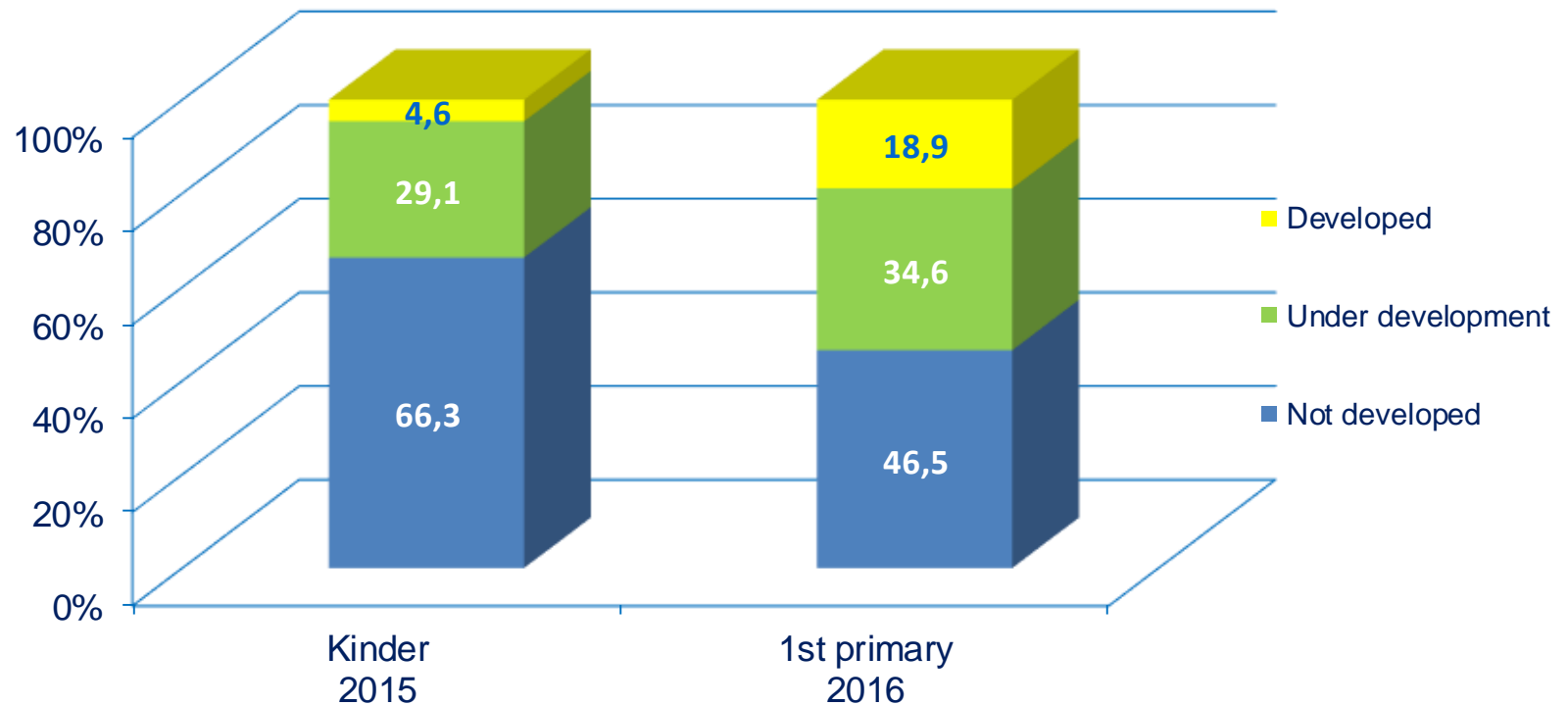
Stages

- Designing, gathering information and early implementation
- Activation and spreading
- Spreading and consolidation
- Appropriation and closing



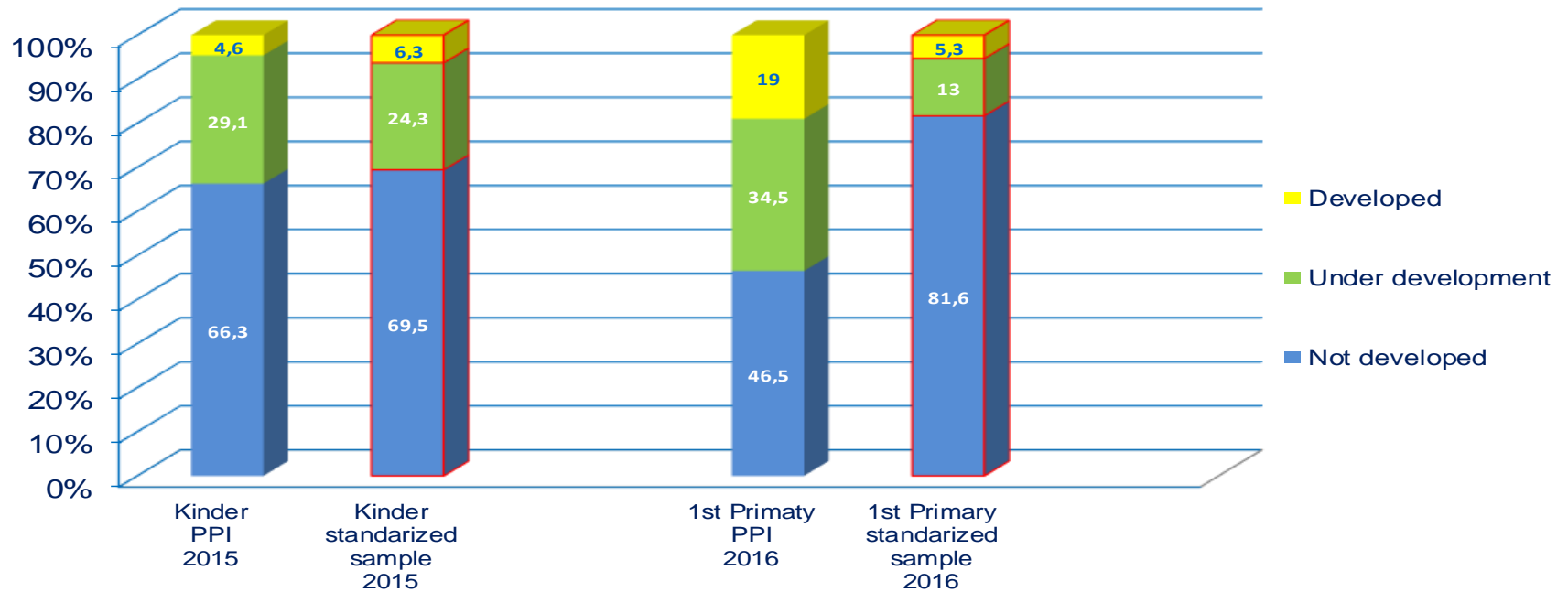
CL – PT TOTAL

Consolidated results in Mejillones and San Pedro de Atacama



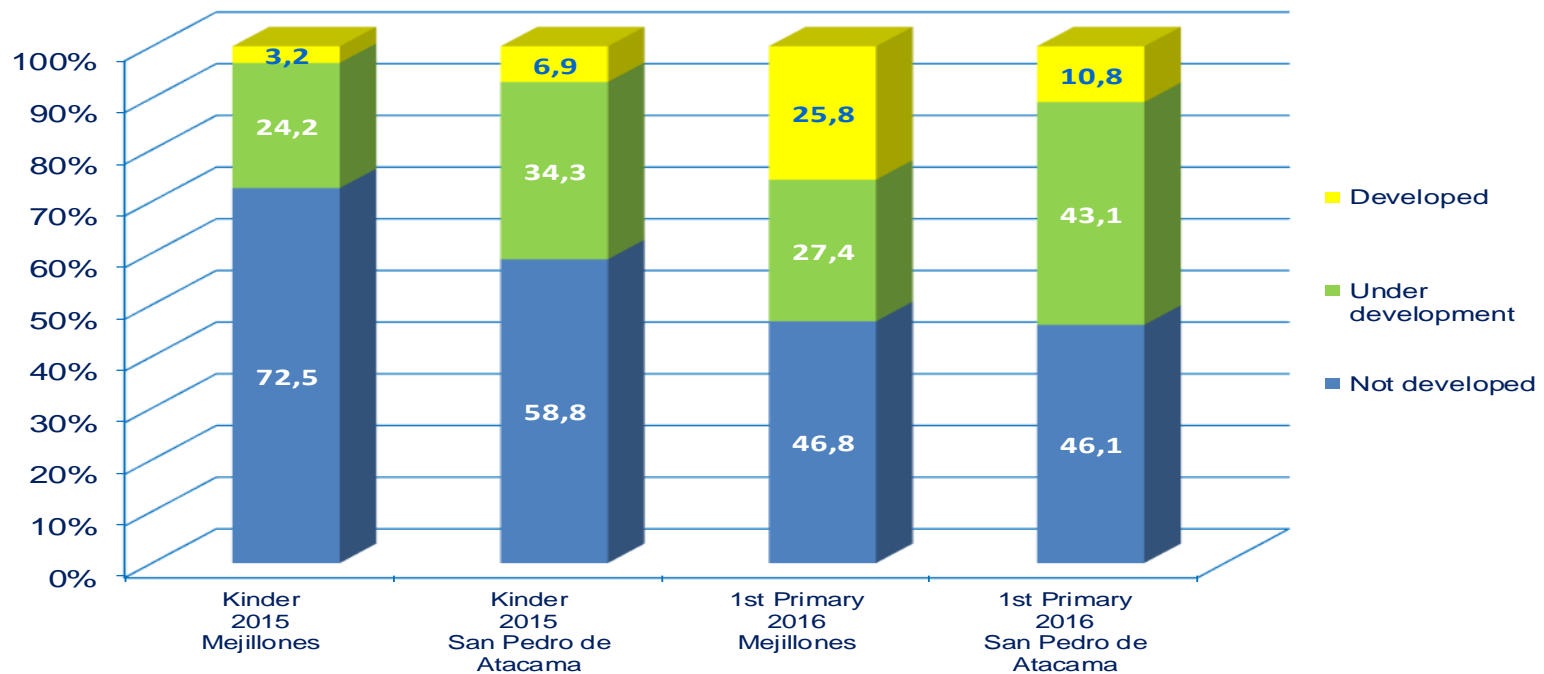
CL – PT TOTAL

Mejillones and San Pedro de Atacama Standardization Sample Comparison



CL – PT TOTAL

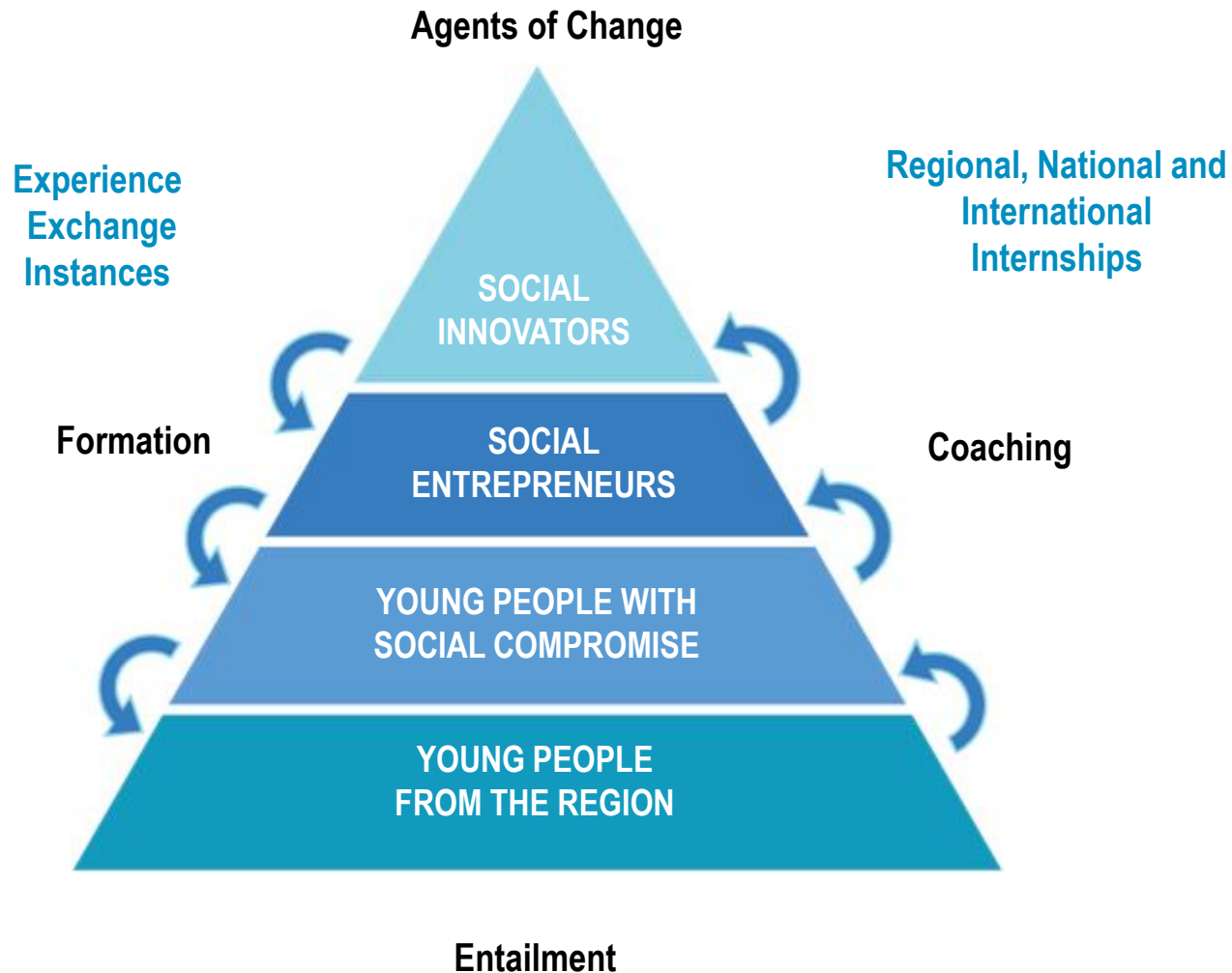
Separate results in Mejillones and San Pedro de Atacama



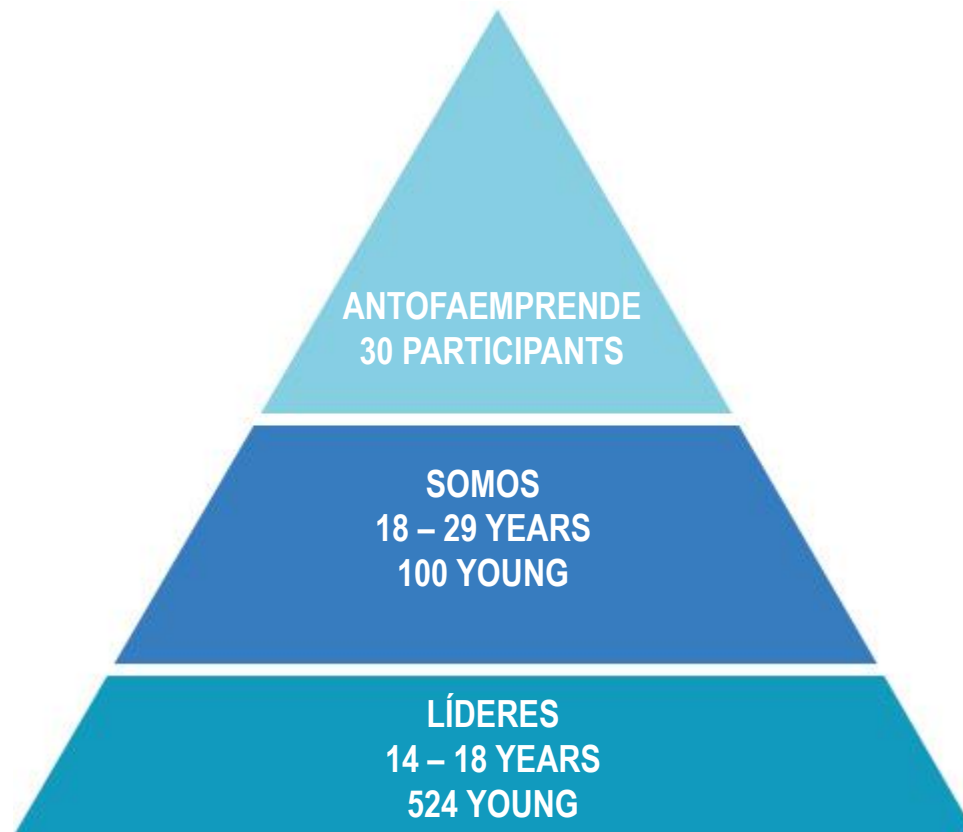
I BUILDING COMMUNITY



Minera Escondida Foundation has been identifying, developing, promoting and strengthening social leadership skills in a group of young individuals from the Region of Antofagasta since 2012.



Our program has gathered over 650 young participants from the region in the last 5 years, including secondary students, communitarian university leaders and social entrepreneurs

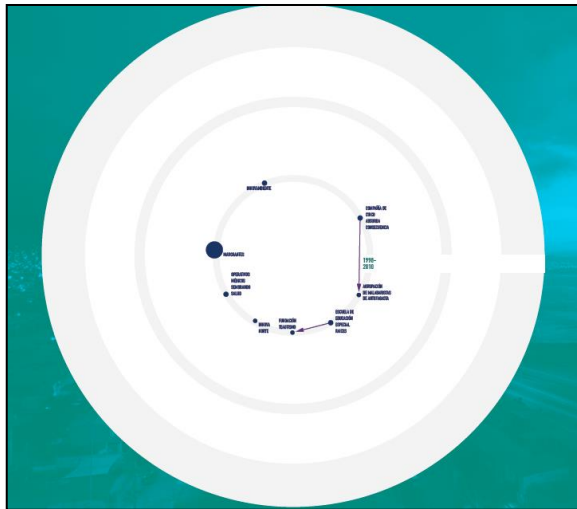


MULTIPLIER EFFECT STUDY

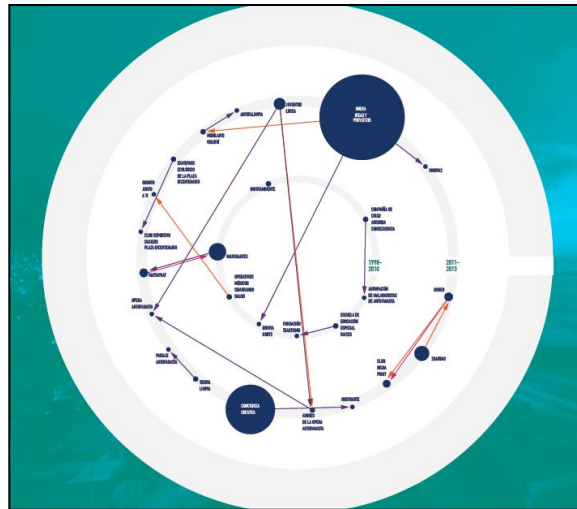
It displays the social entrepreneurial ecosystem growth in Antofagasta between 1998 and 2017

99 Entrepreneurs represented in the study

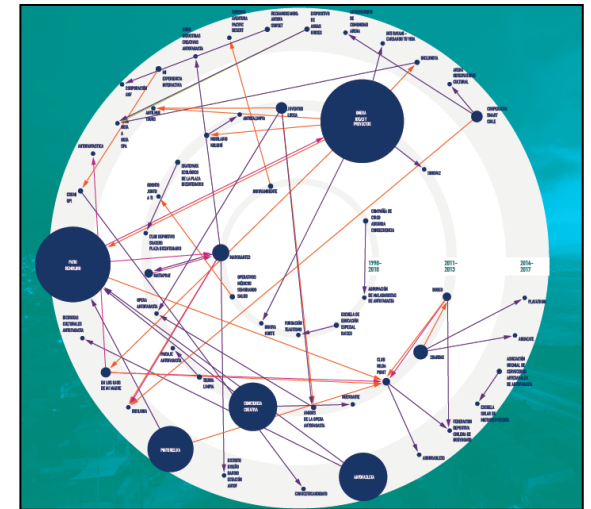
68 Projects represented in the study



Period 1998-2010



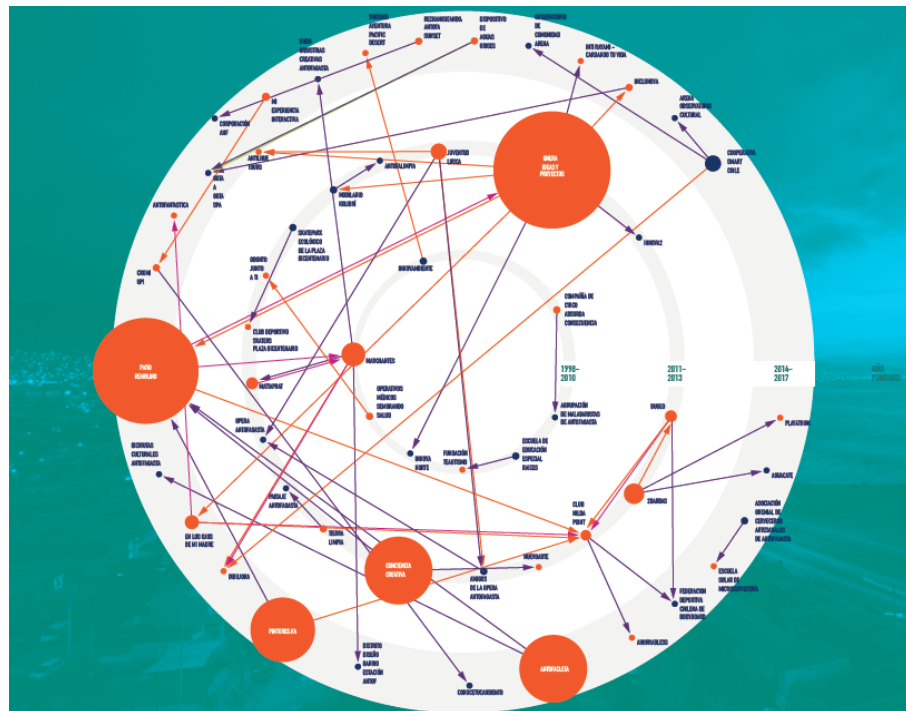
Period 2011-2013



Period 2014-2017

MULTIPLIER EFFECT STUDY

Social entrepreneur projects linked to MEF along their lives cycle



I CULTURE AS AN ELEMENT OF INTEGRAL DEVELOPMENT



I CULTURE AS AN ELEMENT OF INTEGRAL DEVELOPMENT

Throughout activities and programs as part of the cultural extension, Minera Escondida Foundation is able to reinforce the community relations so then setting a base for both strategic targets: Education and Social Participation.

Antofagasta Minera Escondida Foundation Art Hall

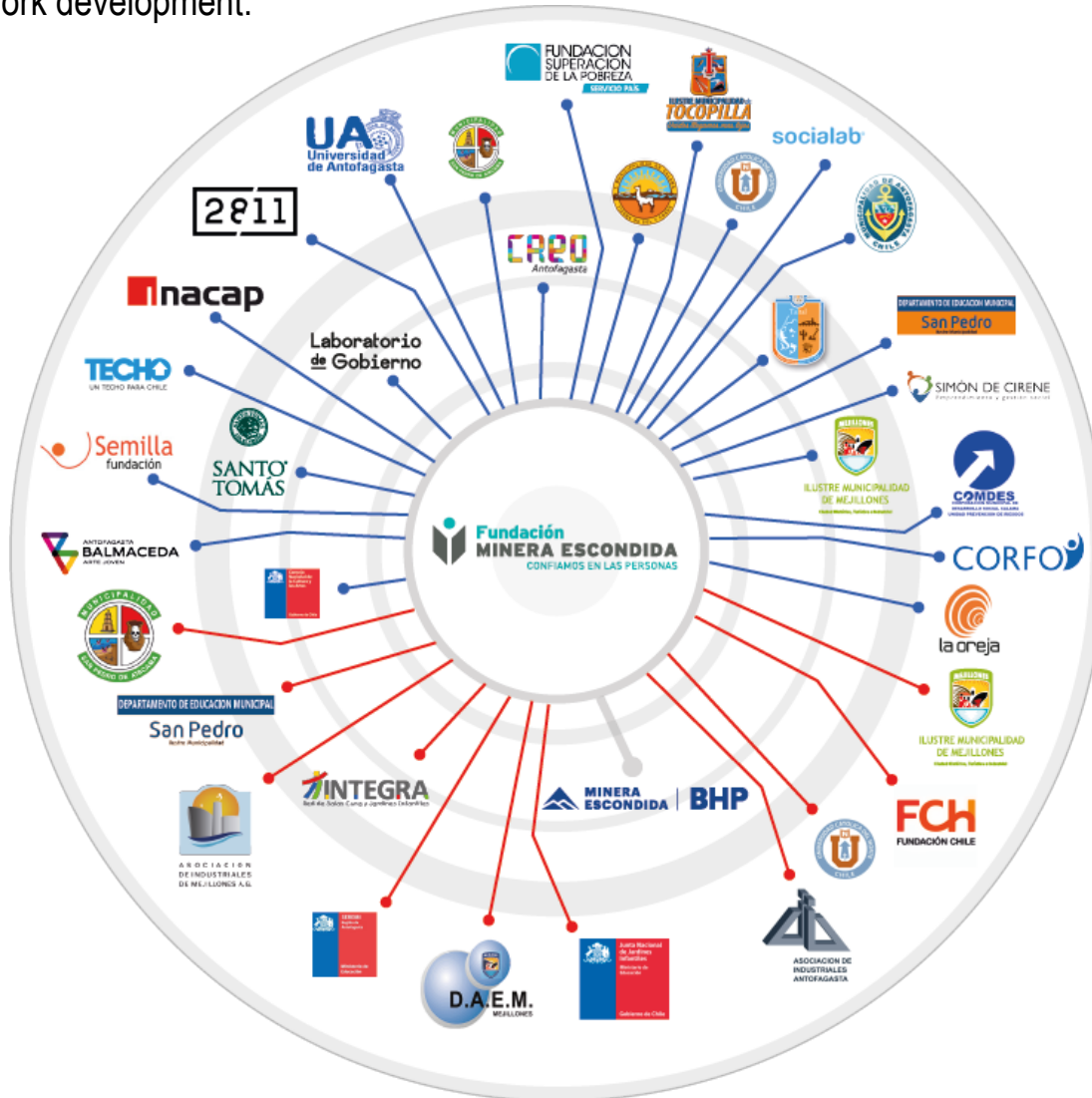


San Pedro de Atacama Minera Escondida Foundation Art Hall

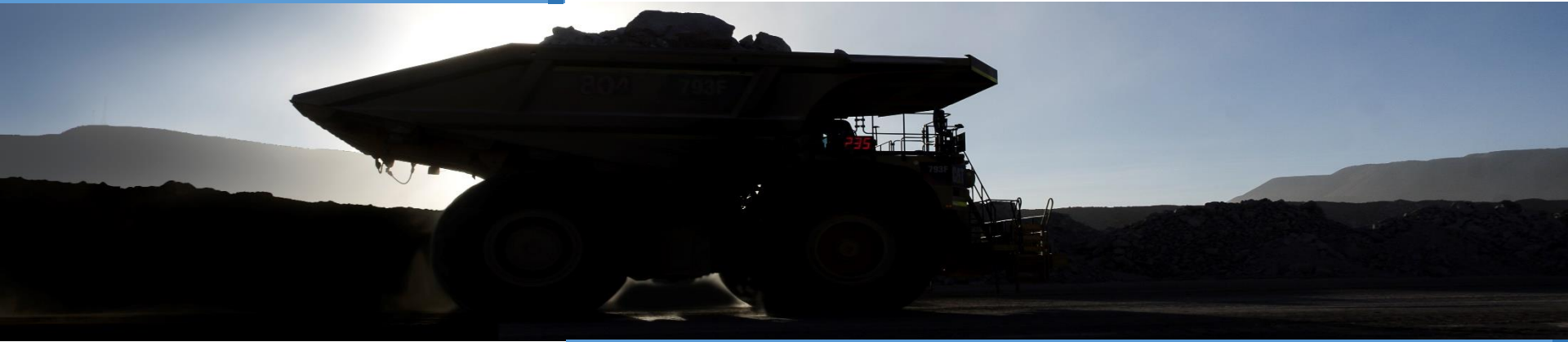


I WE ARE PART OF AN ECOSYSTEM

Both public and private alliances have let us improve actions and activities we currently project as a benefit for the community and the region. So, based on this work system we have encouraged our programs consolidating collaboration and network development.



I ANTOFAGASTA:



I CAPITAL INNOVATION AND KNOWLEDGE



PROMPTING ABILITIES FOR THE FUTURE



OECD Mining Regions: building a network to enhance productivity and well-being

5th and 6th October 2017
Antofagasta - Chile

CONVENES



PRESENTS



COORDINATES



ORGANIZES



COLLABORATES



MEDIA PARTNER



Municipalidad
Antofagasta



Universidad
Católica del Norte